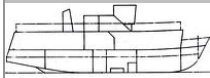




CLYDE MARINE SERVICES LTD



PASSENGER / CREW TENDER (HIGHLY MANOEUVRABLE)

200 Persons up to 3 miles offshore

CRUISER

GENERAL

DELIVERY DATE
BASIC FUNCTIONS
CLASSIFICATION

1974
Personnel Transport
MCA Class IV, V, VI + VI(A)
certificates for up to 200 persons
MCA Workboat Code Category 2

DIMENSIONS

LENGTH O.A. 24.0 m
BEAM O.A. 7.60 m
DEPTH 2.80 m
DRAUGHT AFT 1.60 m
DISPLACEMENT 170 Te.
GRT.50 119

TANK CAPACITIES

FUEL OIL 15968 litres (13.41 Te)
FRESH WATER 4446 litres (4.4 Te)

PERFORMANCES

SPEED 9.0 knots

PROPULSION SYSTEM

MAIN ENGINES 2 X Gardner
TOTAL POWER 224 KW (300 bhp)
PROPELLERS 2 x fixed pitch propellers
1 X Schottel bow thruster

ACCOMMODATION

The vessel is certified to transport 200 persons up to 3 miles from land and is equipped with a galley and toilet facilities

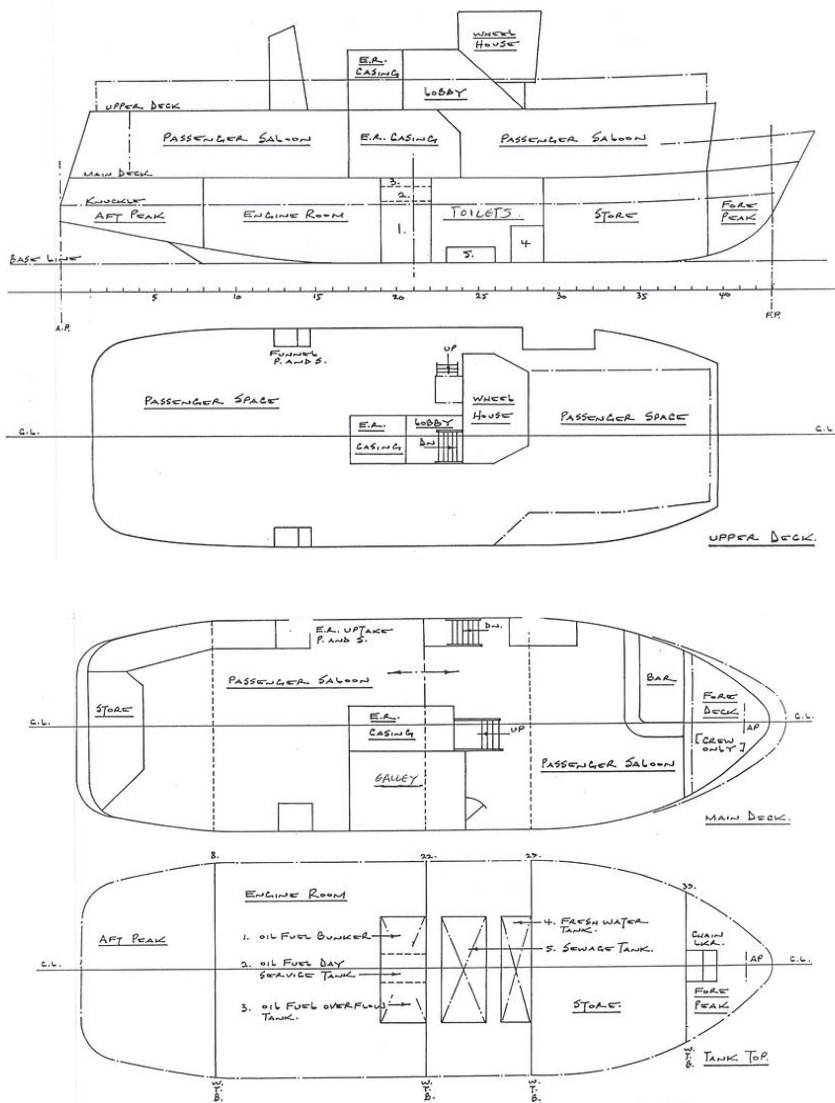
Forward cabin dimensions: 6.0m X 7.4m
Aft cabin dimensions: 6.0m X 6.9m

NAUTICAL AND COMMUNICATION EQUIPMENT

RADAR SYSTEM Furuno
COMPASS Sestrel
VHF Sailor RT2048
CHART PLOTTER Simrad
SEARCHLIGHT Francis
GPS equipped
AIS equipped



CLYDE MARINE SERVICES LTD



CONTACT DETAILS

CLYDE MARINE SERVICES LTD

Victoria Harbour,
GREENOCK,
PA15 1HW
SCOTLAND

Tel: 01475 721281

Fax: 01475 888023

Email: hamish.munro@clyde-marine.co.uk

www.clyde-marine.co.uk